

13 SEER PERFORMANCE



Air Conditioning & Heating

GPC13H/GPH13H

AIR CONDITIONING
& HEAT PUMP
PACKAGED UNITS



Thank goodness for Goodman.®



Air Conditioning & Heating

ENERGY EFFICIENCY IS KEY...

...to controlling the cost and comfort of heating your home. Goodman® brand GPC/GPH13H Packaged Air Conditioners and Heat Pumps provide value and cutting-edge technology to homeowners and small businesses. Plus, our extensive product offering ensures that you get the right system for your specific cooling and heating needs.

Goodman brand packaged units sit on the ground or rooftop outside your home or business and deliver quiet, year-round comfort from a single, self-contained unit. These energy-efficient units operate as an air conditioner during warm weather, and in the winter deliver electric or heat pump-generated warmth.



COMFORT. SAVINGS. PERFORMANCE.

PACKAGED AIR CONDITIONING

An energy-efficient Goodman brand GPC13H Packaged Air Conditioner is your best bet for long-lasting, high-efficiency air conditioning where space is at a premium.

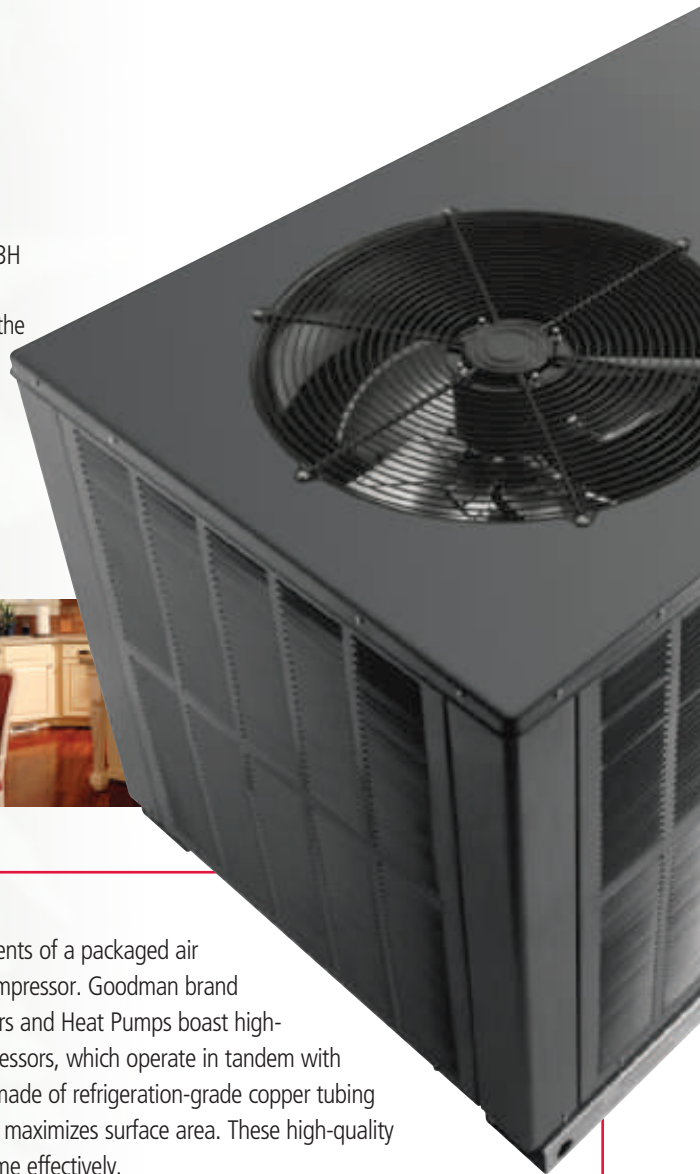
PACKAGED HEAT PUMPS

The high-quality Goodman brand GPH13H Packaged Heat Pump provides economical air conditioning, then, by reverse cycle, delivers economical heating during colder periods. Supplementary electric heat is added at pre-determined temperatures during cold spells.



RELIABILITY AND LONG LIFE

One of the most critical components of a packaged air conditioner or heat pump is the compressor. Goodman brand GPC/GPH Packaged Air Conditioners and Heat Pumps boast high-performance, high-efficiency compressors, which operate in tandem with our high-efficiency coil. The coil is made of refrigeration-grade copper tubing and aluminum fins in a design that maximizes surface area. These high-quality components together cool your home effectively.



R-410A REFRIGERANT

Compared to lower SEER, R-22 refrigerant units, your new Goodman brand GPC/GPH13H Packaged Air Conditioner and Heat Pump will not only provide you with money-saving cooling performance for many years, but it also features R-410A refrigerant. Since this refrigerant does not contain chlorine, it is environmentally-friendlier than R-22 refrigerant, which is currently used in most air conditioning systems.

Introduced in 1995, R-410A refrigerant has helped increase the durability and reliability of heat pump compressors.





IMPRESSIVE FEATURES & BENEFITS: GOODMAN® BRAND GPC13H/ GPH13H PACKAGED AIR CONDITIONER

- ♦ Energy-efficient compressor with internal relief valve
- ♦ GPC13H: PSC/EEM for 4 and 5 ton units
- ♦ GPH13H: PSC/EEM for 5 ton units
- ♦ Quiet horizontal discharge
- ♦ Totally enclosed, permanently lubricated condenser fan motor
- ♦ Chlorine-free R-410A refrigerant
- ♦ Heavy-gauge galvanized-steel cabinet with attractive Architectural Gray powder-paint finish
- ♦ Fully insulated blower compartment with convenient access panels
- ♦ Louvered coil protection



Talk to your Goodman brand dealer about opportunities to optimize the efficiency of your new unit.

OUTSTANDING WARRANTY* PROTECTION






* Complete warranty details available from your local dealer or at www.goodmanmfg.com. To receive the 10-Year Parts Limited Warranty, online registration must be completed within 60 days of installation. Online registration is not required in California or Quebec.

ADDITIONAL INFORMATION

Before purchasing this appliance, read important information about its estimated annual energy consumption, yearly operating cost, or energy efficiency rating that is available from your retailer.



Thank goodness for Goodman®

| MODEL | COOLING/ HEATING EFFICIENCY | LIMITED WARRANTY* COVERAGE  |  | TONNAGE | HEAVY-GAUGE GALVANIZED -STEEL CABINET | COMPRESSOR WITH INTERNAL RELIEF VALVE | LOUVERED CONDENSER COIL PROTECTION | FACTORY INSTALLED FILTER DRYER |  ** |
|-------------------|-----------------------------------|---|---|------------|---|--|---|--------------------------------------|--|
| GPC15M | Up to 15 SEER | ● | ● | 2 to 5 Ton | ● | High-Efficiency | ● | ● | ● |
| GPC14H | Up to 14 SEER | ● | ● | 2 to 5 Ton | ● | High-Efficiency | ● | ● | ● |
| GPC13H/ GPH13H | 13 SEER | ● | ● | 2 to 5 Ton | ● | Energy-Efficiency | ● | ● | |
| GPC13M | 13 SEER | ● | ● | 3 to 5 Ton | ● | Energy-Efficiency | ● | ● | |
| GPH15M | 13 SEER 8.0 HSPF | ● | ● | 2 to 4 Ton | ● | High-Efficiency | ● | ● | ● |
| GPH14H | Up to 14 SEER Up to 8.4 HSPF | ● | ● | 2 to 5 Ton | ● | High-Efficiency | ● | ● | ● |
| GPH13M | 13 SEER Up to 8.0 HSPF | ● | ● | 3 to 5 Ton | ● | Energy-Efficiency | ● | ● | |

* Complete warranty details available from your local dealer or at www.goodmanmfg.com. To receive the 10-Year Parts Limited Warranty, online registration must be completed within 60 days of installation. Online registration is not required in California or Quebec.



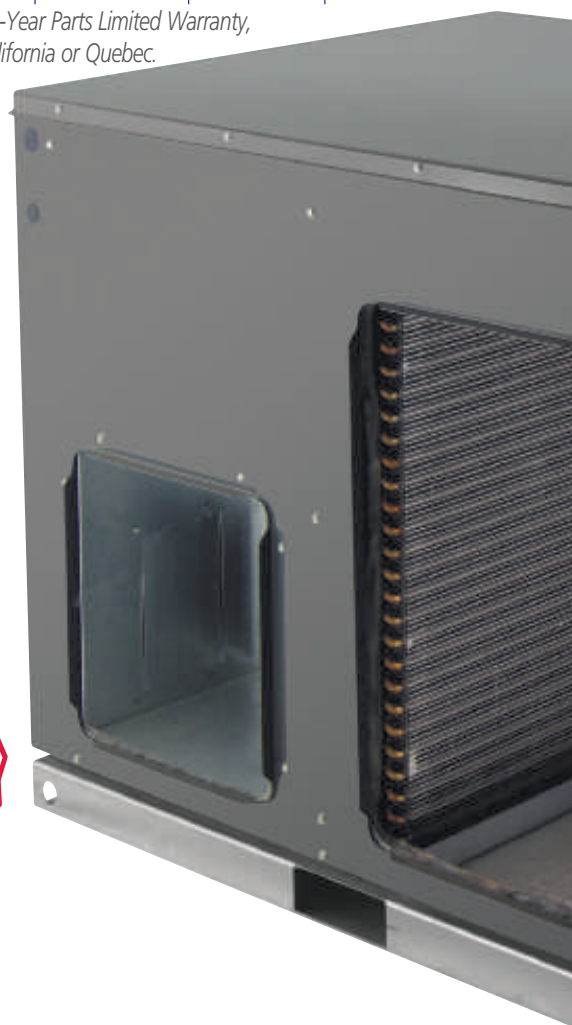
** ENERGY STAR ratings are dependent upon conditions beyond equipment installation. To make certain your HVAC equipment qualifies for the ENERGY STAR designation, get complete information at www.energystar.gov.

GOODMAN: THE RECOGNIZED INDUSTRY LEADER

Every Goodman brand heating and air conditioning system is designed, engineered, and manufactured with pride. All employees follow strict, quality-driven processes to ensure that all Goodman products offer the legendary performance that has made the brand a recognized leader in the industry. This attention to quality has resulted in the Goodman family of companies becoming the second largest unit manufacturer of residential air conditioning and heating systems in North America.

THE GOODCARE® EXTENDED SERVICE PLAN

For even greater peace of mind, ask your dealer or visit our web site at www.goodmanmfg.com for more details about **GoodCare**, an affordable Parts and Labor Extended Service Plan for your entire Goodman brand HVAC system.†



Air Conditioning & Heating

Our continuing commitment to quality products may mean a change in specifications without notice.

© 2011 Goodman Manufacturing Company, L.P. · Houston, Texas

www.goodmanmfg.com

CB-GPC13H/GPH13H 11-11